

S1001 OPERATION

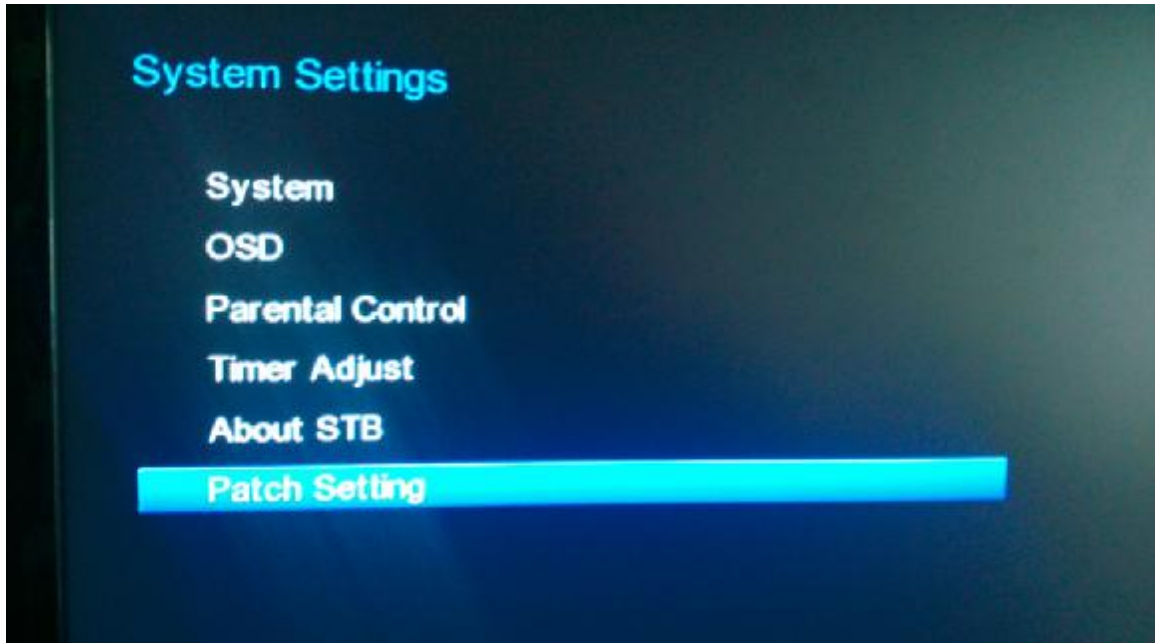
The decoder have tuner 1 and tuner 2. The tuner 1 is receive TV channel (like amazonas (61w), star one c2(70W)etc...), the Tuner 2 is receive iks key from satellite like(Hispasat (30w)---with most channels satellite ,amazonas(61w), Or Galaxy26 (89w)) those satellite date inbuild receiver system, not need setting.

C : HOW TO SET DECODER ?

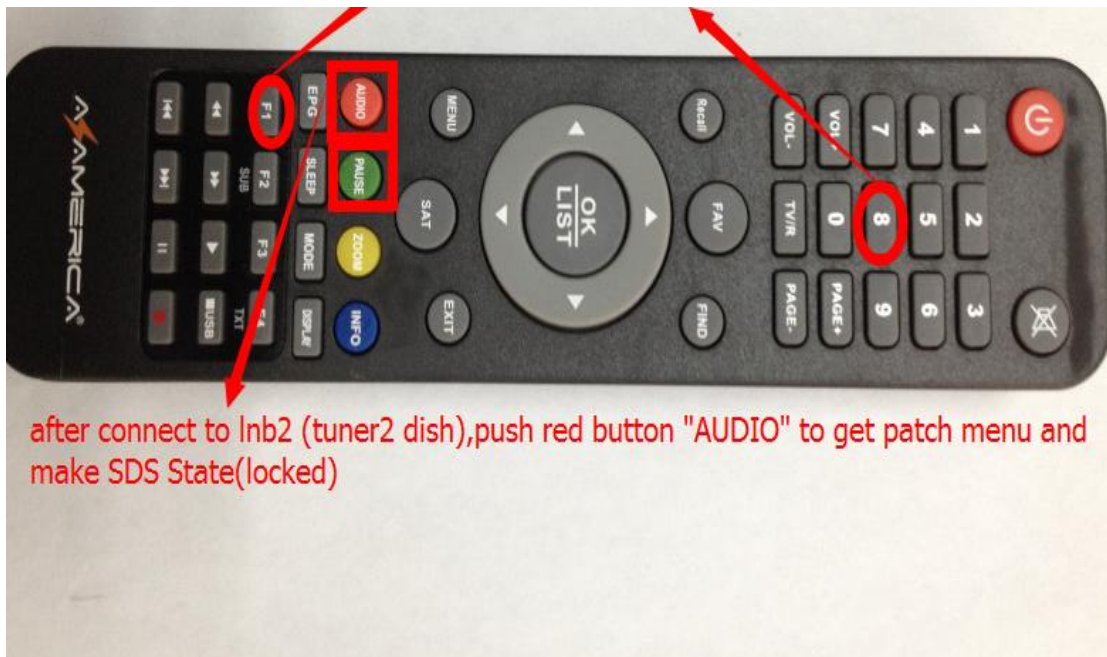
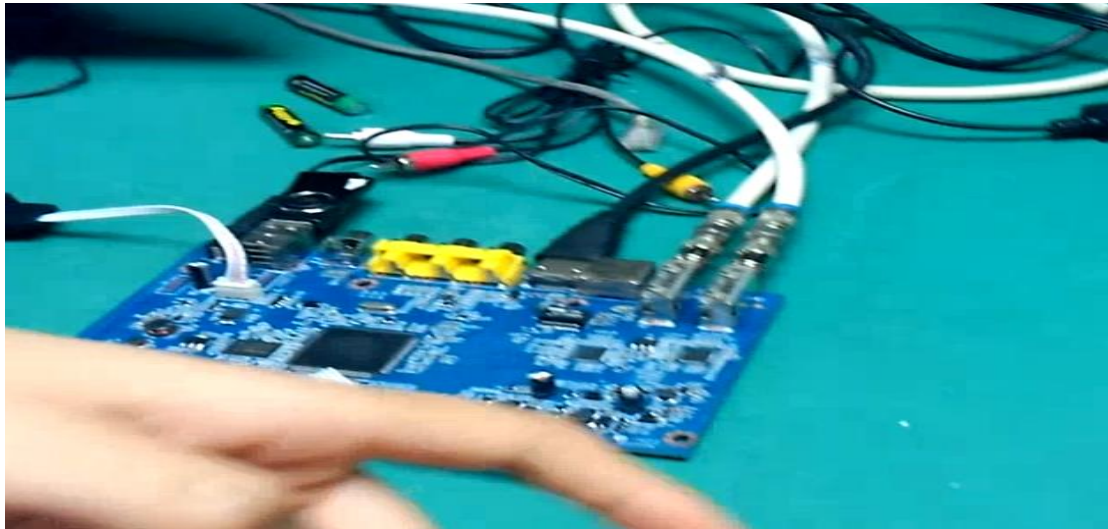
1. Before u push menu , make sure open the patch enable , operate is “Press F1 , then 8 8 8 , “Patched enabled “prompt will appear on the TV”



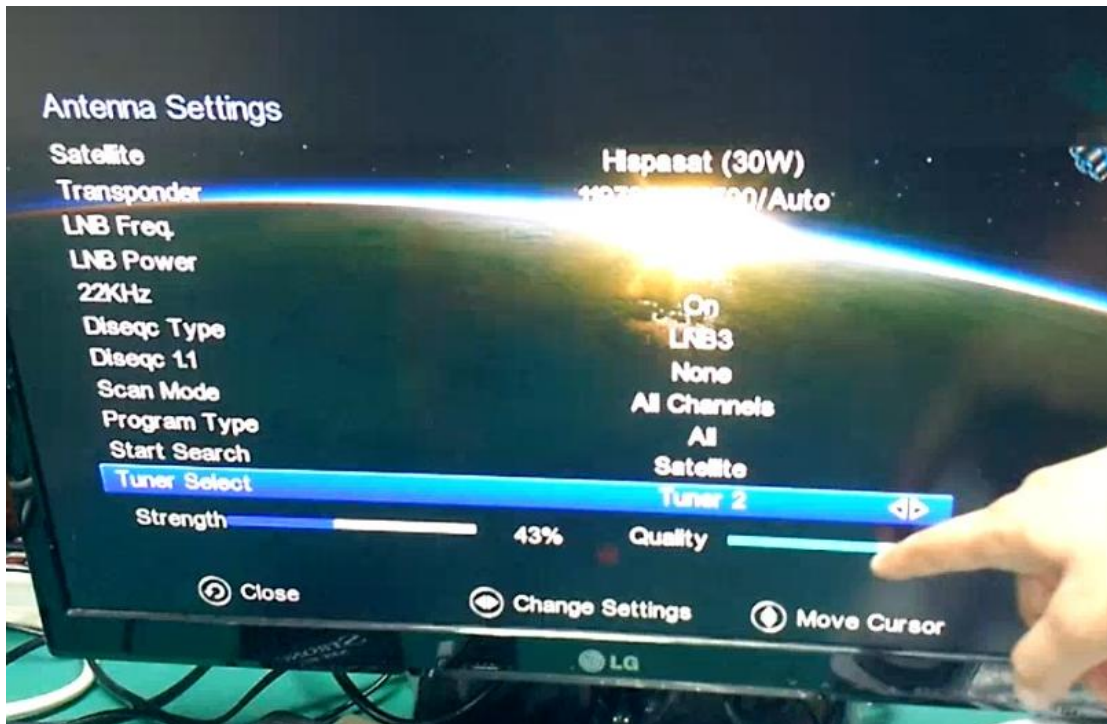
2. Go to MENU ---SYSTEM SETTINGS ---PATCH SETTING
-----CHOOSE “ SDS MODE”, can open the SKS function., if u
want to via IKS to get key , plz choose the “Ethernet CSC”



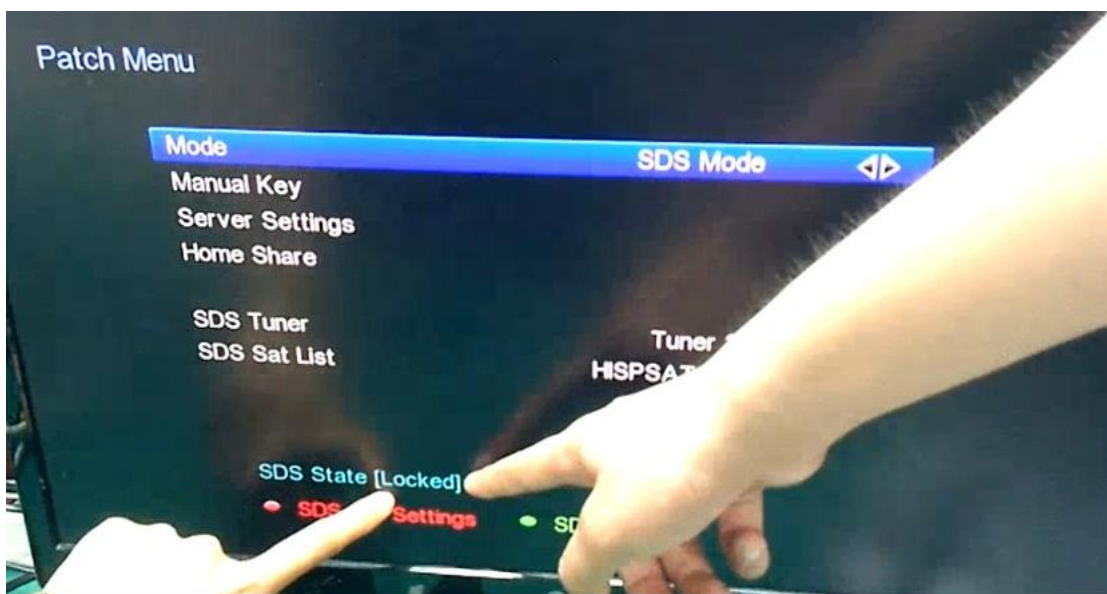
3,Connect to LNB1 LNB2



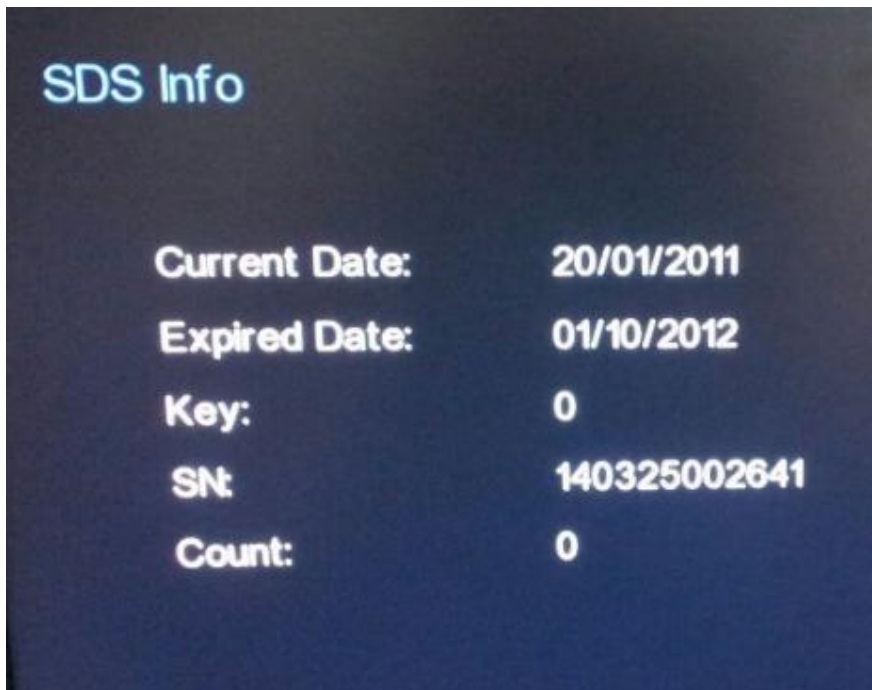
4,After push red button “ AUDIO” button then you will see menu as follow: take care can get STRENGTH & Quantity date



5,Then push “ red button （AUDIO） ” button from Patch Menu, you will see SDS State(Locked) as follow:



6,Exit and push green button” Pause” then you will see SDS Info as follow, if setting successful, you can see the key date, if not successful, what you get is “0”



Why Patch menu SDS State(lock fail) ?

that is because not connect to LNB signal.

